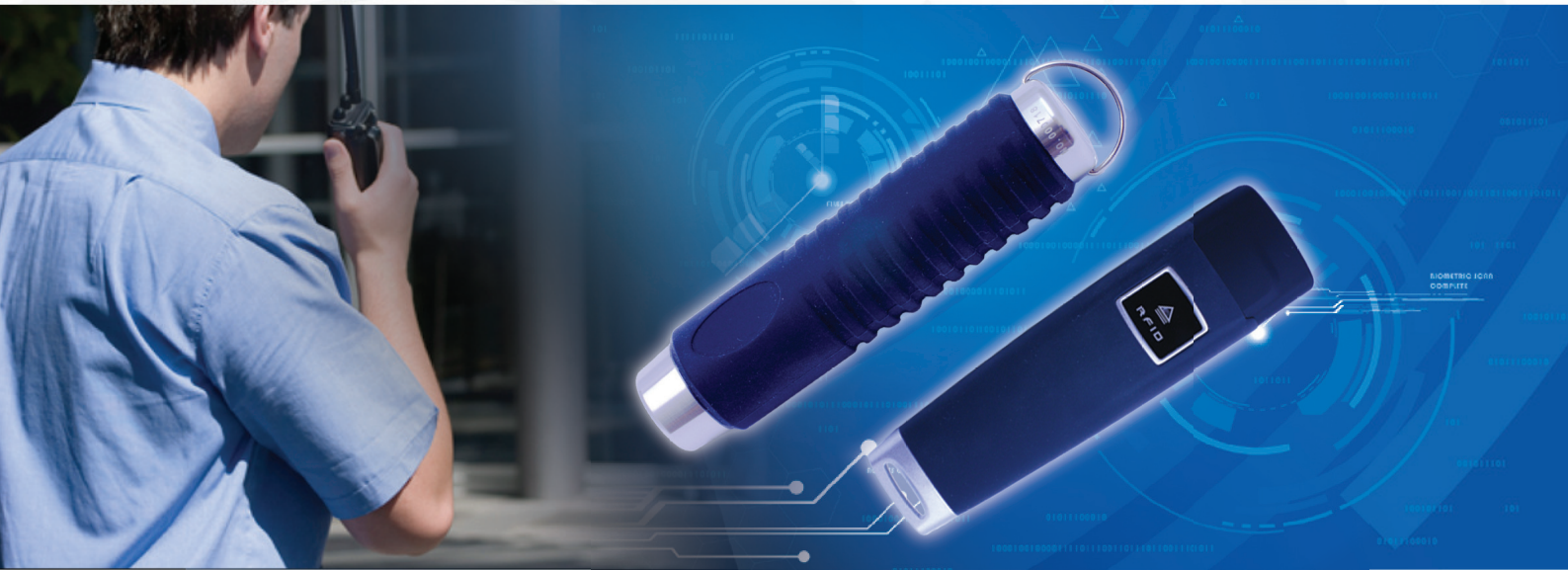




Guard Tour System



The IES Guard Tour System is a new age data logging system, which is designed to provide efficient and effective management of your field personnel's patrolling activities, replacing the traditional mechanical time clock tracking-system. The IES Guard Tour System uses the sophisticated yet user-friendly touch-memory technology developed by Dallas Semiconductor Corporation of the United States as its core operation base, which is designed to provide highly effective control over the patrolling system management, thus producing significantly reliable reading results. The core function of the system is to ensure that the designated field personnel are performing their duties as scheduled and planned by providing the management with electronic record of evidence of duty that cannot be manipulated by those whose duties it was designed to regulate.

● How Does The System Function?

Field personnel on duty will be given the touch probe, which they will use to touch onto the respective checkpoints at their scheduled locations. By touching the probe onto the checkpoints, the reader in the touch probe will automatically record on real time date, time, checkpoint location and exceptional events as visited by the individual field personnel. The data collected and stored in the touch probe can be downloaded into the PC via the downloaded. Reports can then be generated for evaluation of performance.

Advantage of Guard Tour System

- ▶ Real time recording of data.
Detail, accurate and easy to manage reports that
- ▶ will be useful as hard evidence.
- ▶ Alteration lock for unauthorized personnel.
- ▶ Tamper-proof security and water resistance.

IES Guard Tour Management Software requirement

PC OS	: Windows XP
RAM	: 512MB
Processor	: Pentium IV minimum
Communication	: USB Port

Touch Probe

ITP-7000i Contact Touch Probe

Construction material	: Stainless Steel with rubber outer shell
Dimension	: 113mm x 28mm
Weight	: 140g
Operating Temperature	: 0 - 85c
Water Resistance	: Yes
Storage	: 7000 records
Visual Indication	: Super bright LED
Audible Indication	: NIL
Battery	: 3V Lithium Battery
Communication	: 1 Wire contact with downloader

ITP-6000+RF RFID Type Probe

Construction material	: Metal Body with molded rubber shell
Dimension	: 130mm x 40mm x 28mm
Weight	: 196g
Operating Temperature	: 0 - 85c
Water Resistance	: Yes
Storage	: 10000 records
Visual Indication	: Blue LED
Audible Indication	: Electronic Buzzer
Battery	: 3V Lithium Battery
Communication	: USB Port
RFID Reading Range	: 3-5cm
RFID Frequency	: 125KHz

CheckPoint

iButton Type

Dimension	: 16.3mm x 5mm
Weight	: 10g
Operating Temperature	: 10-65c
Construction Material	: Stainless Steel Button

RFID Type

Dimension	: 16.3mm x 5mm
Weight	: 10g
Operating Temperature	: 10-65c
Construction Material	: Plastic Molded Casing
Reading Range	: 1-2cm
Frequency	: 125KHz

Downloader

Construction material	: Aluminum
Dimension	: 102mm x 102mm x 42mm
Weight	: 210g
Operating Temperature	: 0 - 65c
Power Supply	: 5V from USB Port
Visual Indication	: Com Status LED
Communication	: USB Port



Downloader



Touch Probe RFID Type



Touch Probe Contact



iButton Guard ID



iButton CheckPoint

